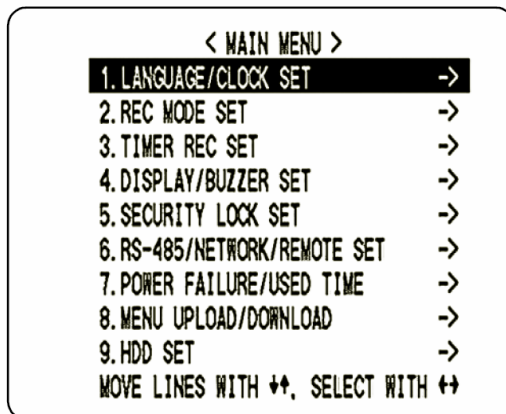


DSR-M8XX SERIES

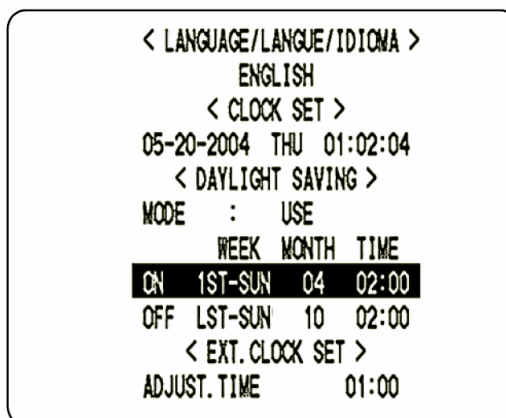
(The changes will only occur if the DVR is not recording)

Backup battery will only last for 30 days. If unit is left disconnected for more than 30 days, all settings will be reset to factory default. Daylight saving menu must be reset.

- Enter the menu by pressing the “Menu” button.



- Highlight “Language/Clock Set” and use the right arrow to enter the menu.



- Scroll down to “1st-SUN 04 2:00” by using the down arrow. Once highlighted, use the right arrow and the 1st should start blinking. Use the up or down arrow to change the 1st to the correct daylight saving. Once you input the correct settings, use the right arrow and the next “Sun” should start blinking.
- Once everything is completed press the “Exit” to return to your live cameras.

CORRECT DAYLIGHT SAVING SET

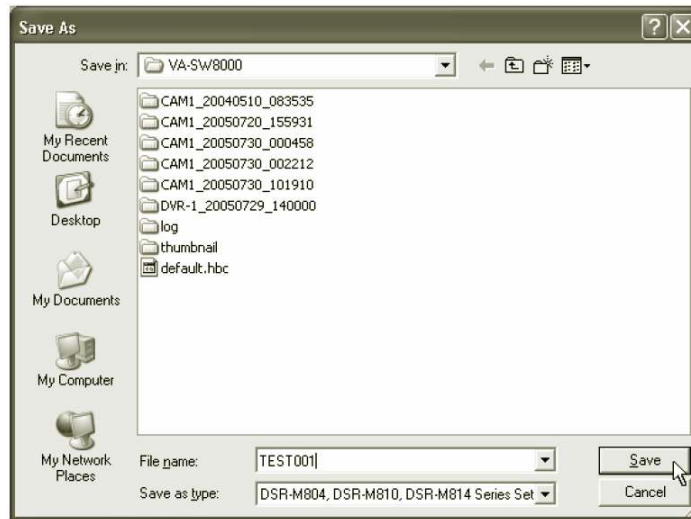
WEEK	MONTH	TIME
2 ND SUN	03	02:00


VA-SW8XXX SOFTWARE

If the DVR is connected to VA-SW8xxx software, there are three methods to configure the DST settings for several DVR. The required user access level must be ID4.

Method 1)

- Once the DVR setting is completed, go to DVR Management menu.
- Choose the selected DVR that has the correct DST from the tree list and then click on import.



- Go to tools and select “Broadcast.”
- The Ranging Broadcast should be set to “All authorized accessible DVRs.”
- Go to “Menu Upload.”
- Click [Browse] and a dialog open to displays a list of referenced files.
- Select the menu file you want to broadcast, and click [Open]. The menu file you plan to broadcast must be stored on your computer’s hard disk before you can broadcast it.
- Use  to upload the menus throughout your accessible DVRs.



Method 2)

- Go to tools and select “Broadcast.”
- Go to “Clock Set” and click on [set].

CLOCK
SET

SET

- Clicking Set instructs all the DVRs to synchronize their internal clocks with your computer's internal clock.

Method 3)

- Click "Initial Set" to open the pull-down menu, and navigate to one of the windows by clicking the corresponding "Option."
- Active the "Auto clock adjust time," and specify the interval of auto synchronization. By activating this feature will automatically synchronize all of the connected DVRs with your computer's internal clock.

AUTO CLOCK ADJUST TIME

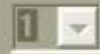


OFF



ON

EVERY



HOURS