

Quality, Reliability and Dependability based on over **50** Years of Experience.

## MULTI-DECK FRESH MEAT CASES

The Merchandiser of Choice for  
All Fresh Meat Products

**FPW-EXA025**

H: 77" / W: 42 1/2" / L: 144 5/8"  
**88.4 cu. ft. capacity**

**FPW-EXA085**

H: 77" / W: 42 1/2" / L: 96 3/8"  
**58.9 cu. ft. capacity**



The FPW Fresh Meat Cases utilize SANYO's Dual Air Curtain System and a new Energy-efficient Evaporator, providing stable temperature control, longer shelf life, and reduced energy consumption.

- Dual Air Curtain for Refrigeration Containment
- Convenient Honeycomb Clips
- Stainless Steel Drain Channel
- Self-trapping and Easy-to-clean Drain
- Easy Electrical Connection Point Access
- High-efficiency Evaporator Coil
- Three-level Adjustable Wire Base Shelf
- Varied Standard and Optional Color Choices

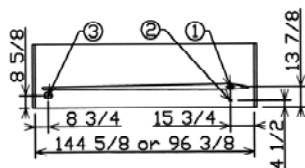
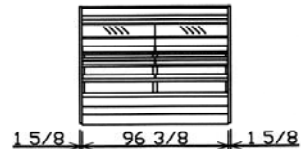
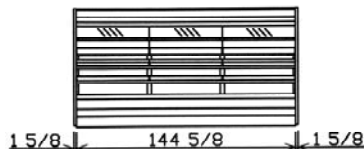
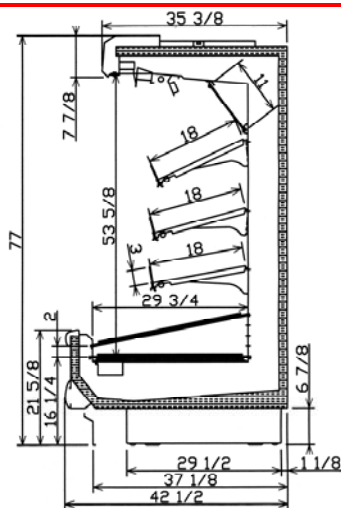
Since 1950, SANYO has been recognized as a global technology leader in manufacturing, sales, installation and servicing of Commercial Products worldwide. Our Food Service Products offer energy-efficient evaporators and reduced energy consumption to lessen our global footprint.

### FPW-EXA025

Height: 77"  
 Length: 144 5/8"  
 Width: 42 1/2"  
 Weight: 992 lbs.

### FPW-EXA085

Height: 77"  
 Length: 96 3/8"  
 Width: 42 1/2"  
 Weight: 661 lbs.



- ① WASTE OUTLET
- ② ELECTRICAL CONNECTION
- ③ REFRIGERATION OUTLET

### ENERGY EFFICIENT

SANYO'S unique airflow guide separates the primary and secondary air curtains, preventing turbulence and maximizing the effectiveness of the Dual Air Curtain.

SANYO's design provides high energy efficiency, stable temperature control and long shelf life.

### MAINTENANCE-FRIENDLY

Ease of maintenance features, including clips for quick Honeycomb detachment for cleaning and re-installation, ample space for accessing electrical connection points in the Raceway, and removable Self-trapping Stainless Steel Drain.

### QUALITY FIRST

SANYO stands behind the quality, reliability and durability of its merchandisers with an industry leading warranty.

### VERSATILE

The FPW Merchandiser accommodates up to four shelves, and comes with options including shelf guards (multiple heights), and mirrors.

Refrigerant:  
 Evaporator Temperature:  
 Ambient Temperature:  
 Cooling Capacity (Conventional):  
 Power Specifications:  
 Front Height:  
 Display Area:  
 Capacity:  
 Open Dimension:  
 Off-Cycle Defrost:

FPW-EXA025	FPW-EXA085
R404A / R407A	
24 degrees Fahrenheit	
75 degrees Fahrenheit, 55% Relative Humidity	
4,157W, 1,182BTU/h/ft	2,771W, 1,182BTU/h/ft
Single Phase 120V	
21 5/8"	
84 sq. ft.	55.9 sq. ft.
88.4 cu. ft.	58.9 cu. ft.
53 5/8"	
30 minute cycles, every 4 hours	

NOTE: The appearances and/or specifications of the products referred in this publication are subject to partial changes without prior notice

Manufactured by:



**SANYO E & E Corporation**  
 2001 Sanyo Avenue  
 San Diego, CA 92154-6229  
 USA

Distributed by:



**SANYO North America Corporation**  
 Commercial Solutions Division  
 2001 Sanyo Avenue  
 San Diego, CA 92154-6229  
 USA  
 Toll Free USA: 800-95-SANYO (72696) – Fax: 619-470-5040  
<http://us.sanyo.com/Food-Solutions>

Marketed by: