



DLP Portable Projectors

Powerful Images for Large Venues
and Digital Signage

PDG-DHT8000L
PDG-DET100L



PDG-DHT8000L

1080p HD 8000 lm

PDG-DET100L

SXGA+ 7500 lm

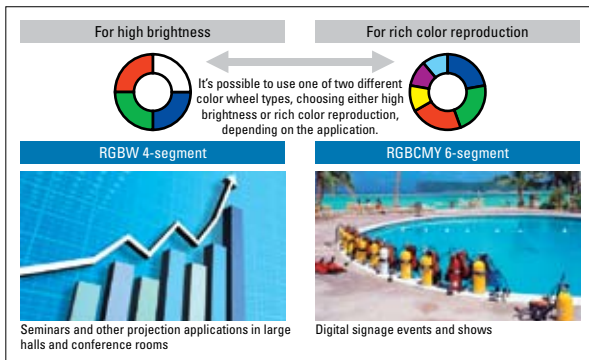


24/7 Feature "Lamp Interval Function"

The "lamp interval function" can be used to automatically switch the lamp that is turned on to an alternate lamp after a programmable period of time in order to reduce the initial lamp deterioration. A user can select from [Off/Auto/200h/500h/1000h/2000h] or 24h interval time, and rotate each lamp for 24/7 usage.

Twin Color Wheel System

The PDG-DHT8000L, DET100L feature a twin color wheel system consisting of a 4-segment wheel (for maximum brightness) and a 6-segment wheel (for maximum color reproduction) that can be easily swapped out by the user. Use the 4-segment wheel to project tabular data or figures from a computer on a large screen with maximum brightness or choose the 6-segment wheel for vivid, beautiful color when picture quality is the top priority, for example when projecting photos or video.



Specifications

Model name	PDG-DHT8000L	PDG-DET100L
Resolution	1080p HD (1920 x 1080)	SXGA+ (1400 x 1050)
Brightness (typical)	8000 Lumens	7500 Lumens
Panel System	0.95" DLP® Chip	0.95" DLP® Chip
Number of Pixels	2,073,600	1,470,000
Contrast Ratio (Full on / off)	7500:1	7500:1
Aspect Ratio	16:9	4:3
Projection Lamp (s)	330W UHP x 2	330W UHP x2
Voltage	100 - 240V	100 - 240 V
Weight (lbs.)	43.2 lbs.	43.7 lbs.
Dimensions (inch)	15.7 x 9.5 x 20.6 inch	15.7 x 9.5 x 20.6 inch
Digital Keystone Correction	V +/- 30°, H +/- 30°	V +/- 30°, H +/- 30°
Digital Interface (HDCP Compatible)	DVI-D HDMI	DVI-D HDMI
Analog Interface	5BNC, D-sub 15 pin, S-Video	5BNC, D-sub 15 pin, S-Video
Network Control / Admin.	Yes	Yes
Optional Boards	POA-AMD23ADI, POA-AMD25VD3, POA-AMD17SDID	POA-MD23ADI, POA-MD25VD3, POA-MD18DVI, POA-MD16VD1, POA-MD17SDID, POA-MD13NET2, POA-MD27NET, POA-MD04VGA, POA-MD21WARP

Optional Lenses

Type	On-axis short fixed lens	Short zoom lens		Standard zoom lens	Long zoom lens	Ultra long zoom lens		
Image								
Part number	LNS-W52	LNS-W53	LNS-W51	LNS-W50	LNS-S51	LNS-T50	LNS-T51	
Zoom/focus	Fixed/power	x1.48/power	x1.25/power	x1.21/power	x1.56/power	x1.8/power	x1.67/power	
Twin stack support	No	Yes	Yes	Yes	Yes	Yes	Yes	
Focal length (inch)	0.67	1.0 to 1.5	1.02 to 1.27	1.26 to 1.51	1.5 to 2.4	2.3 to 4.2	4.0 to 6.6	
F-value	2.0	2.4 to 2.7	2.3 to 2.7	2.0 to 2.1	2.0 to 2.7	2.0 to 2.9	2.3 to 3.2	
Lens weight (lbs)	6.8	5.4	9.0	7.3	4.1	8.1	8.4	
Projection light axis	H1:H2 (approx.)	1:1 (fixed)	21:-1 to -1:21	6.65:-1 to -1:6.65	6.65:-1 to -1:6.65	21:-1 to -1:21	6.65:-1 to -1:6.65	6.65:-1 to -1:6.65
	W1:W2 (approx.)	1:1 (fixed)	3:1 to 1:3	10.7:1 to 1:10.7	10.7:1 to 1:10.7	3:1 to 1:3	10.7:1 to 1:10.7	10.7:1 to 1:10.7
Throw ratio	0.8:1	1.2 to 1.8:1	1.2 to 1.5:1	1.5 to 1.8:1	1.8 to 2.8:1	2.8 to 5.0:1	4.8 to 8.0:1	

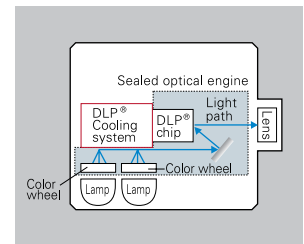
SANYO. . . Providing More Projector Solutions

Toll free: **888-337-1215** www.sanyoprojectors.com

©2011 SANYO North America Corporation.

New Dust-Resistant Sealed Optical Engine

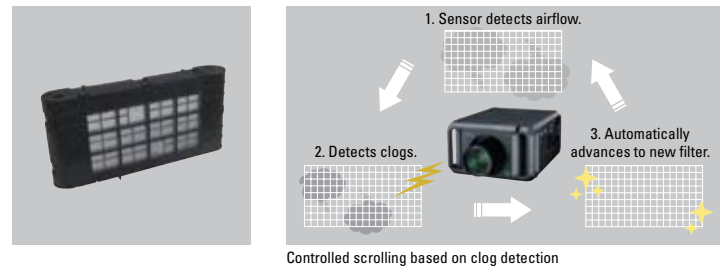
A new and improved sealed optical engine cooling design prevents dust build-up to help maintain optimal brightness and contrast, providing an innovative solution for a traditionally difficult area of projector design and preventing the reductions in projection quality that can come with dust accumulation. Improved air control means more flexibility in using the projector in a variety of environments.



Active Maintenance Filter for Clean, Reliable Projection

The PDG-DHT8000L, DET100L are equipped with a replaceable Active Maintenance Filter featuring the industry's longest-lasting* 25,000-hour automatic reel filter cartridge to keep dust out of the lamp area while still allowing enough airflow to cool the lamp. Benefits include improved reliability, increased dust resistance, and more time between filter replacements. Filter-less use is also available.

* As of planned product introduction in June 2010. Estimated filter replacement time is 25,000 hours (in normal mode) or 35,000 hours (in Eco 1 mode). This value is calculated by an original SANYO test based on JIS D0207 test methods with normal mode selected.



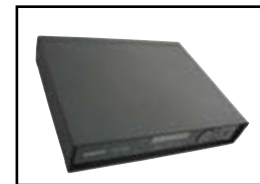
HD Wireless Transmitter / Receiver

The optional HD DATA WIRELESS Transmission System is a valuable AV partner in places such as large event halls, large rooms, theaters or places where it is too difficult to consider wire/cable connectivity. Just think -wire-or-cable-free projector image transmission, with no delay and only the clearest HD resolution. Now that's a great-looking solution.

• POA-MD26HDWLS available for: PDG-DHT8000L



Receiver with adapter
POA-MD26HDWLS



Transmitter
POA-HDTM01