

## PJ Network Manager For Windows

This is the manual for the PJ Network Manager software.  
This software is Windows-compliant, but non-Mac-compliant.  
Read this manual thoroughly to operate the PJ Network Manager software.  
First, read the owner's manual of the projector to understand the basic operation of the projector and the safety instructions.  
The safety instructions in the owner's manuals should be followed strictly.

# Contents

---

<b>Chapter 1 Introducing .....</b>	<b>3</b>
Introducing.....	3
SNMP .....	3
Trademarks.....	3
Operating Environment.....	4
<b>Chapter 2 Set up .....</b>	<b>5</b>
PJ Network Manager installation.....	6
PJ Network Manager un-installation.....	6
<b>Chapter 3 Basic Operation .....</b>	<b>7</b>
Launching and quitting PJ Network Manager.....	8
Name of status window.....	8
Quitting PJ Network Manager.....	9
Menu tree .....	9
What's Target.....	9
Name of the button on the tool bar.....	10
Icon display for the target.....	10
Addition of the target .....	11
Editing the target.....	11
Deletion of the target.....	11
Setting up the warning value .....	12
Starting target monitoring.....	12
When happens the alert on the target.....	13
When happens the trap event on the target.....	13
What's Trap.....	13
Stopping monitoring the target.....	14
Displaying all the status information of the target .....	14
Setting up default setting.....	15
Customizing the status list.....	17
Viewing the alert information.....	20
Viewing the event log.....	21
Description of Event, Type, Warning column, Warning value .....	22
About event treatment.....	24
Storing the management file .....	26
Information saved to the registry .....	26
Registering the target information from the defined file at once.....	27
Format of the defined file .....	28
Example of the defined file.....	28
Login to the target equipment .....	29

# Chapter 1 Introducing

## Introducing

This PJ Network Manager is a SNMP manager software for the network equipment which supports the private MIB (Management Information Base).

By installing the PJ Network Manager to the computer, you can monitor the equipment simply such as the projector, the projection monitor and the flat display monitor connected to the network.

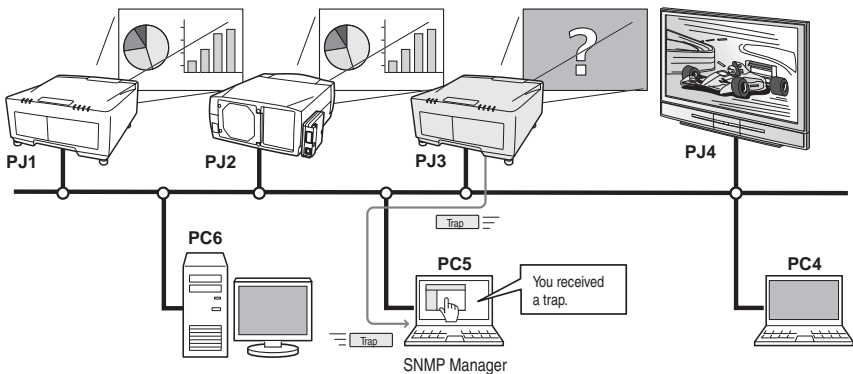
\* The PJ Network Manager can handle our products which has a SNMP agent function.

## SNMP

SNMP is an abbreviation for Simple Network Management Protocol.

On the TCP/IP network, it is the protocol to monitor and control the equipment connected to the network.

SNMP realizes the management function by reading and changing the management information called MIB with SNMP protocol between the manager (management equipment) and agent (controlled equipment) which are connected with TCP/IP network.



## Trademarks

Microsoft, Windows, Windows 2000, Windows XP, Windows Vista are registered trademarks of Microsoft Corporation. Macintosh is a registered trademark of Apple, Inc. in the USA and other countries. Other products or brand names in this manual are registered trademarks or trademarks of their respective owners.

\* Unauthorized use of a part or whole of the contents in this manual is prohibited.

\* The contents of this manual are subject to change without notice.

# Operating Environment

Item	Minimum	Recommended
CPU	Pentium III 400MHz or higher	Pentium 4 2.0GHz or higher for Windows XP Pentium 4 3.0GHz or higher for Windows Vista
Memory	128MB or higher	256MB or higher for Windows XP 1GB or higher for Windows Vista
HDD	More than 20MB of free disk space	
Screen resolution	SVGA (16 colors or more)	XGA True color or more
LAN	10Mbps or more	100Mbps or more
OS	Windows 2000 Windows XP	Windows XP Professional SP2 Windows Vista (32bit version)

## Limited condition

The number of agents monitored is up to 200.

## Expression/Abbreviation

The OS of the computer and the Web browser described in this manual is Windows XP Professional and Internet Explorer 6.0. In case of another OS or Web browser, some instruction procedures may differ from the actual operation depending on your computer environment.

## Use of this manual

This manual does not provide the description of basic operation and functions for computer, web browser, projector and network. For instructions about each piece of equipment or application software, please refer to the respective manual.

# Chapter 2

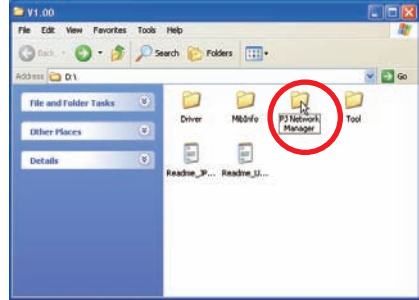
## Set up

---

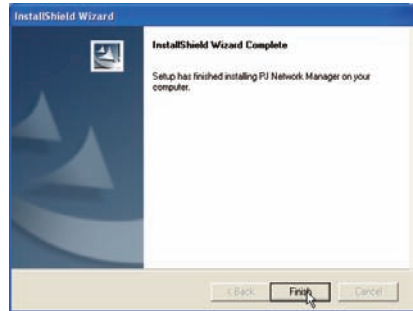
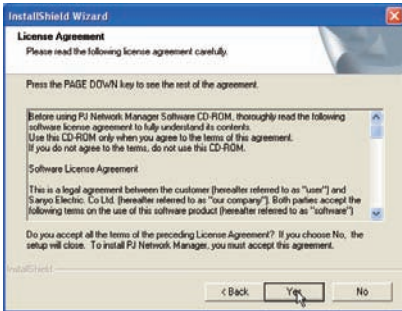
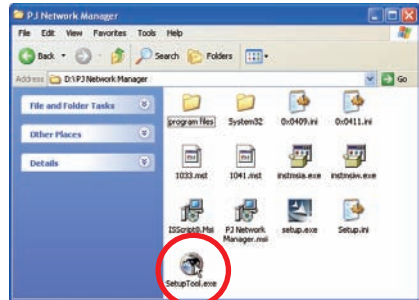


## PJ Network Manager installation

- 1 Set the supplied CD-ROM into the CD-ROM drive of your computer. Double click **SetupTool.exe** icon in the "PJ Network Manager" folder in the CD-ROM.
- 2 Select "[English [United States]]" from the pull-down menu on the "Choose Setup Language" window and click **OK** button to start installing and then follow the installation wizards.



As the "Software License Agreement" will appear, read contents carefully and click **Yes** button if you agree with the license agreement to proceed with installing.



### Note:

To install the software into the computer with Windows 2000, Windows XP or Windows Vista you should logon as administrator. Before installation, make sure that the other applications are closed, otherwise proper installation cannot be made.

## PJ Network Manager un-installation

To remove the PJ Network Manager software from your computer, perform it with "Add & Remove Programs" on the control panel.

# Chapter 3

## Basic Operation

---

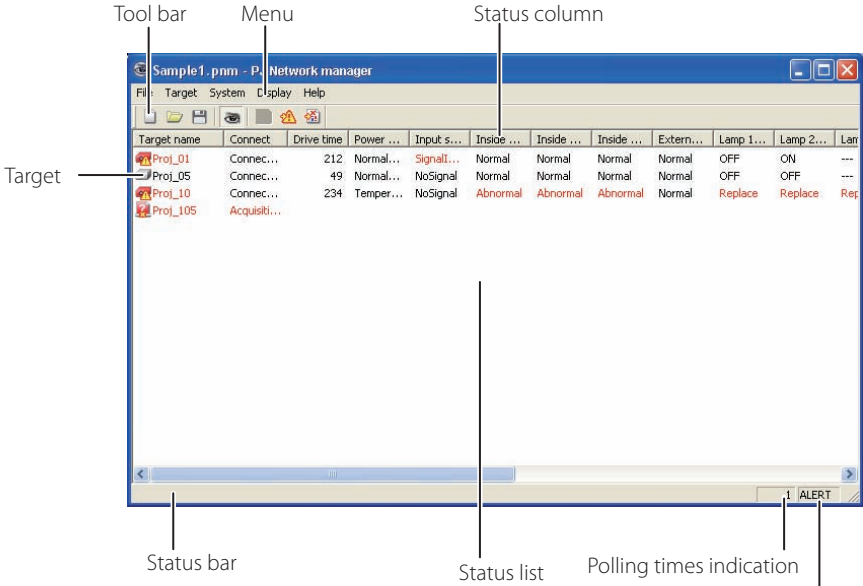
3

## Launching and quitting PJ Network Manager

To launch PJ Network Manager, take one of the following.

- Select "PJ Network Manager" from the menu "Start" - "All programs".
- Double click a management file\*1.

### Name of status window



\* With double clicking the target name, the web browser is launching and displays login window of the target. (p.29)

Items	Description
Menu.....	Executes a command with menu selection
Tool bar .....	Executes a command assigned to a button.
Target .....	Network equipment for monitoring.
Status bar.....	Indicates the status of PJ Network Manager and explaining the command selected with cursor.
Status list.....	Indicates the status of targets monitoring. When some errors are detected, the target name, icon and error items are indicated with red.
Status column .....	Column of status list.
Polling times indication .....	Indicates the times of polling during the monitoring.
Event indication.....	Indicates the event (ALERT, TRAP, SYSERR) when the event happened.

\*1 The file in which the Monitor target information and event log information are stored. Refer to item "Storing the management file" (p.26) for further details.

**[Note]**

**\* The PJ Network Manager cannot open multiple status windows at the same time.**

## Quitting PJ Network Manager

To quit the PJ Network Manager, click the close box on top right of the status window, or select "Exit" from the "File" menu

## Menu tree

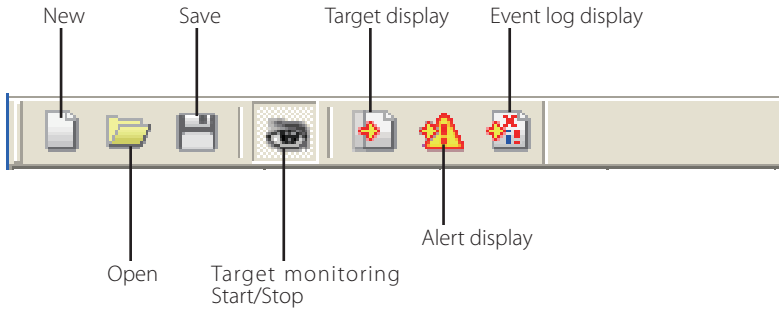
Menu	Sub menu	Operation
File	New	Creates a new management file.
	Open	Opens an existing management file.
	Save	Saves the active management file.
	Save As	Saves the active management file with a new file name.
	Exit	Quits the application.
Target	Target monitoring	Starts or stops target monitoring.
	Target addition	Adds a new target. Target information window will appear.
	Target editing	Edits selected target information.
	Target deletion	Deletes the selected target.
	Warning value setting	Sets up the warning value of the selected target.
System	Target batch registration	Imports target information defined with the external file.
	System default setting	Sets up the default setting (monitoring information, e-mail information).
	Column selection	Selects display items on the status list.
	Font setting	Sets up display font type and size on the status list.
Display	Update	Updates the information on the status list display.
	Target display	Displays selected target information.
	Alert display	Displays all of alert information on the status list.
	Event log display	Displays all the event logs.
	Tool bar	Switches tool bar on or off.
Help	Version information	Displays version of software.

## What's Target

Target indicates the network equipment which provides an SNMP agent function .

## Name of the button on the tool bar

The following commands are assigned to the buttons on the tool bar.











Button	Operation
New	Creates a new management file.
Open	Opens an existing management file.
Save	Saves the active management file.
Target monitoring	Starts or stops target monitoring.
Target display	Displays selected target information.
Alert display	Displays all of alert information on the status list.
Event log display	Displays all the event logs

 To switch the tool bar display on or off, select "Tool bar" from "Display" menu.

## Icon display for the target

Displays icon according to the target condition.


Icon		Condition
Flat display type	Projector type	
 Proj_05	 Proj_05	Normal
 Proj_01	 Proj_05	Abnormal condition (One of the abnormalities, Alert, Trap or System error is happening on the target.)
 Proj_01	 Proj_100	Connection error (Target has been disconnected from the network)
 Proj_100		Acquisition error (Target has been disconnected from the network, or does not provide SNMP function.)
 Proj_100		Unknown (Target monitoring is not operating)

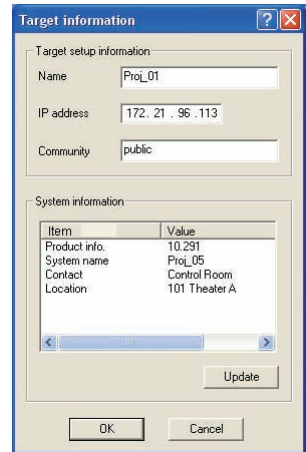
## Addition of the target

**1** Select **Target Addition** from **Target** menu. The target information registering window appears.

Items	Description
<b>Name</b> .....	Enter a management name of the target equipment.
<b>IP address</b> .....	Enter IP address of the target equipment.
<b>Community</b> .....	Enter a community name in the network. Default name is "public".
<b>System information</b> .....	Displays information set on the network equipment

**2** Enter target setup information and click **Update** button. The information set on the target equipment are displayed on the system information items.

 When the target equipment is not operating, or it is not the monitoring equipment, the error dialog "Cannot obtain information" will appear.




**3** Click **OK** to close the window. Repeat the above steps to register for other equipment which is to be managed.

## Editing the target

**1** Select a target name to edit on the status list with right click.

**2** Select **Target editing** on the popup menu. The target information window will appear and edit the contents, then click **OK** button.

 The system information cannot be edited.

 Target editing can be executed by selecting **Target editing** from **Target** menu.

## Deletion of the target

**1** Select a target name to delete on the status list with right click.

**2** Select **Target deletion** on the popup menu. The confirmation dialog will appear and click **Yes** button to execute deleting.

 Target deletion can be executed by selecting **Target deletion** from **Target** menu.

 It cannot perform the target addition, editing and deletion during the target monitoring.

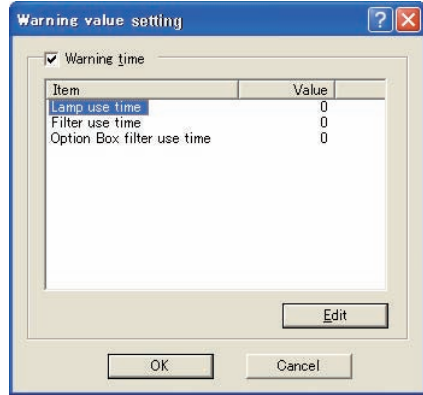
 Up to 200 targets can be registered.

 Up to 255 characters can be used for target name and community.

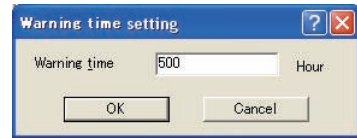
## Setting up the warning value

PJ Network Manager provides a function to display the alert when the use time of the setting item reaches a specified setting time. The available setting items (use time) are depending on the target equipment.

- 1 Select a target on the status list with right click.
  - ☞ When setting multiple targets together, select targets with pressing "Shift" or "Control" key.
- 2 Select **Warning value setting** on the popup menu. The setting window will appear as the right figure.
- 3 Check **Warning time** check box. The setting items are activated. Select a setting item and click **Edit** button. Another setting window appears.
- 4 Enter the threshold value of selected item and then click **OK** button. The setting window will disappear.
- 5 Set up warning value for remaining items if available and then click **OK** button. The setting window will disappear.
  - ☞ To disable the warning value, clear **Warning time** check box.




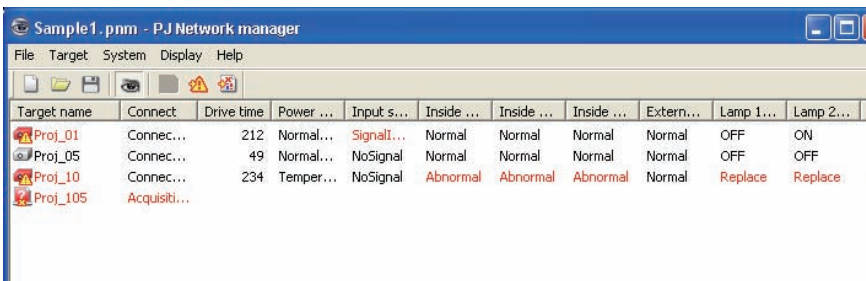
(Example of the set up window)



☞ When selecting multiple targets, the value set to the lowest target on the status list is displayed as the current setting time. Up to 99,999 hours can be set for the use time. The warning value is stored in the management file.

## Starting target monitoring

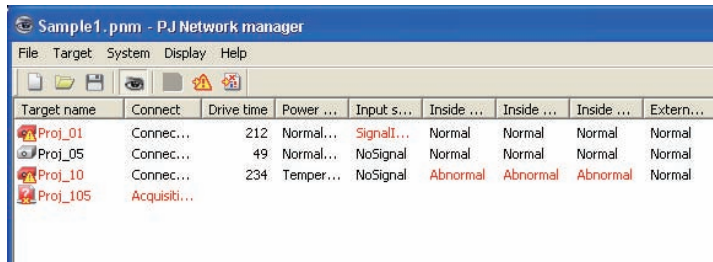
- 1 Click  button on the tool bar to start monitoring the target.
- 2 PJ Network Manager starts polling the target in a sequential from the top of the status list and displays the results on the status list.



## When happens the alert on the target

If the abnormality or connection error happens on the target, PJ Network Manager indicates target name, icon and status column item with red color to let you know the abnormality.

- ☞ When PJ Network Manager cannot acquire the MIB information of the target equipment, it indicates as Connection Error.
- ☞ The interval of target monitoring is according to the setting of **Monitoring interval** on **System default setting** from **System** menu. (☞p.15)

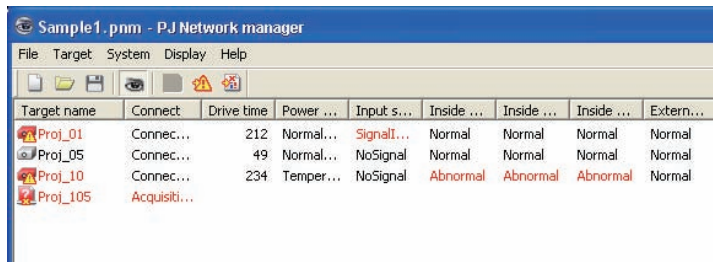


Target name	Connect	Drive time	Power ...	Input s...	Inside ...	Inside ...	Inside ...	Extern...
Proj_01	Conne...	212	Normal...	SignalI...	Normal	Normal	Normal	Normal
Proj_05	Conne...	49	Normal...	NoSignal	Normal	Normal	Normal	Normal
Proj_10	Conne...	234	Temper...	NoSignal	Abnormal	Abnormal	Abnormal	Normal
Proj_105	Acquisiti...							

## When happens the trap event on the target

During the target monitoring, if the predefined event (trap) happens on the target equipment, the target sends the trap information to PJ Network Manager. This trap information is displayed on the status list immediately.

The notification of the trap information is set up in the SNMP setting items of the target equipment. Projector has items such as "When PJ lamp is off", "When the life span of lamp is reached", "When internal PJ power circuit is failed" etc. For further trap information, refer to SNMP trap information in the separated network owner's manual.



Target name	Connect	Drive time	Power ...	Input s...	Inside ...	Inside ...	Inside ...	Extern...
Proj_01	Conne...	212	Normal...	SignalI...	Normal	Normal	Normal	Normal
Proj_05	Conne...	49	Normal...	NoSignal	Normal	Normal	Normal	Normal
Proj_10	Conne...	234	Temper...	NoSignal	Abnormal	Abnormal	Abnormal	Normal
Proj_105	Acquisiti...							


## What's Trap

Trap is the event predefined by the SNMP agent. If the predefined event ("When PJ lamp is off", "When internal PJ power circuit is failed" etc.) happens, target sends trap information to the SNMP manager.

## Stopping monitoring the target

To stop monitoring the target, click  button again on the tool bar.

## Displaying all the status information of the target

Select a target and click  button on the tool bar. The following status window appears and displays all the available status information of the target.



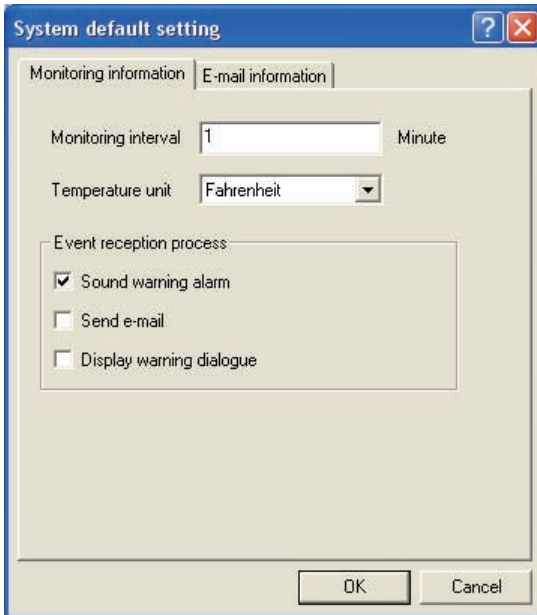
- ✎ The target name and item which have an abnormality or connection error happening are indicated with red.
- ✎ When PJ Network Manager cannot acquire the value of column information, "----" is displayed.

## Setting up default setting

The monitoring information and e-mail information can be set up by the procedure below.

- 1 Select **System default setting** from **System** menu. The setting window will appear.
- 2 Switch by clicking **Monitoring information** or **E-mail information** tab for each setting.

### Monitoring information

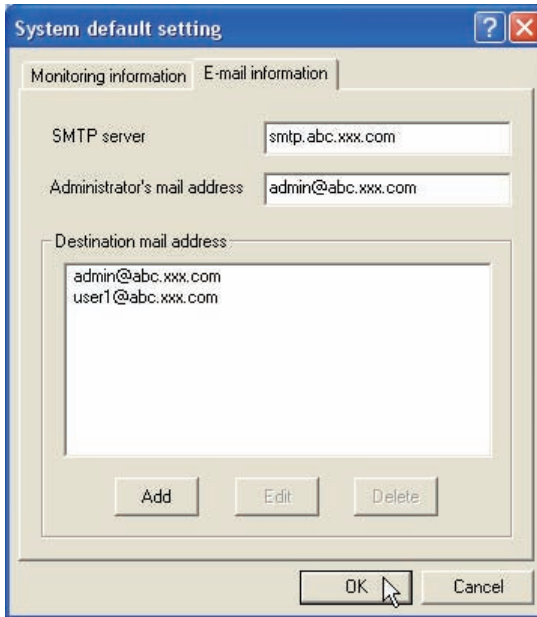


### Monitoring information

Items	Description
-------	-------------

Monitoring interval .....	Sets up the interval of the polling in minute unit. (1 to 99 minutes can be set)
Temperature unit .....	Sets up the display temperature unit Centigrade or Fahrenheit.
Event reception process.....	Sets up the treatment when the event (ALERT, TRAP, SYSERR) happens on the target. For further information, refer to the item "About event treatment" (p.24).
	<input checked="" type="checkbox"/> Sound warning alarm
	<input type="checkbox"/> Send e-mail
	<input type="checkbox"/> Display warning dialogue

## E-mail information



### E-mail information

Items	Description
SMTP server .....	Sets up the IP address of SMTP mail server or server host name.
Administrator's mail address.....	Sets up the e-mail address of administrator
Destination mail address.....	Sets up the destination mail address when the event (ALERT, TRAP, SYSERR) happens on the target. The mail address entering window appears when clicking <b>Add</b> button.

☞ If **Send e-mail** check box of **Event reception process** on **Monitoring information** is un-checked, the alert e-mail will not be sent even if you set up the e-mail address.

☞ Up to 10 addresses can be set up for the destination mail address.

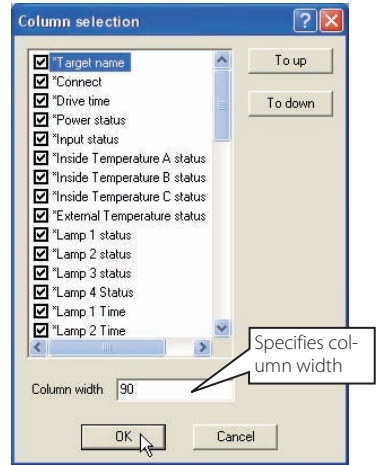
☞ For the contents of the mail, refer to item "About event treatment" (p.24).

## Customizing the status list

### Changing the status column indication

- 1 Select **Column selection** from **System** menu. The column selection window will appear.
- 2 On the window, check the column name to be indicated on the status list.
  - ☞ The mark [\*] next to the column name indicates alert item.
- 3 To change the order of the display column on the status list, select a column you intend to change the order and click **To up** or **To down** button.
- 4 Click **OK** to close setting.

☞ When specifying the column width by numeric value, enter number (0 to 9999) onto "Column width" text box.



Column	Description
*Target name.....	Name of the network equipment
*Connect.....	Status of connection to the network (Connected, Un-connected)
*Drive time .....	Accumulated use time of the equipment
*Power status.....	Power status of the equipment (Normal(Power-on), Normal(Standby), Power Management, Power failure, lamp failure, etc.)
*Input status.....	Input signal status (Signal, No signal, Signal interrupted)
*Inside Temperature A status.....	Status of inside temperature A (Normal, Warning, Error)
*Inside Temperature B status.....	Status of inside temperature B (Normal, Warning, Error)
*Inside Temperature C status.....	Status of inside temperature C (Normal, Error)
*External Temperature status.....	Status of external temperature (Normal, Warning, Error)
*Lamp1 status .....	Status of Lamp1 (Off, On, Error, Replace)
*Lamp2 status .....	Status of Lamp2 (Off, On, Error, Replace)
*Lamp3 status .....	Status of Lamp3 (Off, On, Error, Replace)
*Lamp4 status .....	Status of Lamp4 (Off, On, Error, Replace)
*Lamp1 time.....	Used time of Lamp1
*Lamp2 time.....	Used time of Lamp2
*Lamp3 time.....	Used time of Lamp3
*Lamp4 time.....	Used time of Lamp4
*Filter status.....	Status of airfilter (Normal, Clogged)
*Option Box filter status.....	Status of option box filter (Normal, Error, Clogged)
*Filter time .....	Use time of airfilter
*Option Box filter time.....	Use time of option box filter
*Error info.....	Error information (Not available for the projector)

☞ The values in parentheses are typical value and they differ depending on the connected equipment.

☞ The [\*] next to the column name indicates alert items.

Column	Description
IP address .....	IP address of the network equipment
Community .....	Community name of the network equipment (public)
Introduction date*1 .....	Date of the network equipment installed
Product info.....	Name of the network equipment
System name .....	System name of the network equipment (Proj_05)
Contact.....	Contact information of the network equipment
Location.....	Installed location of the network equipment
Input signal .....	Information of the input mode (Input1, Input2, etc.)
Input select .....	Information of the input source (RGB, VIDEO, S-VIDEO, NETWORK, etc.)
Network status.....	Condition of the network mode (Off line, Network Viewer, Network Capture)
Audio system .....	Displays audio system mode (NORMAL, PERSONAL, MUSIC, TALK)
Volume .....	Sound Volume of the network equipment
Treble.....	Sound treble of the network equipment
Bass.....	Sound bass of the network equipment
Balance.....	Sound balance of the network equipment
Mute.....	Sound mute status of the network equipment (ON, OFF)
Power management.....	Power management status of the network equipment (OFF, READY, SHUTDOWN)
Monitor out.....	Monitor out status of the network equipment (ON, OFF)
Shutter.....	Shutter status of the network equipment (OFF, High-Contrast, Normal)
Shutter management.....	Shutter management status of the network equipment (Shutdown)
Fan control.....	Fan control status of the network equipment (Normal, Maximum, OFF, On1, etc.)
Inside Temperature A.....	Displays inside temperature A of the equipment (in Centigrade or Fahrenheit)
Inside Temperature B.....	Displays inside temperature B of the equipment (in Centigrade or Fahrenheit)
Inside Temperature C.....	Displays inside temperature C of the equipment (in Centigrade or Fahrenheit)
External Temperature.....	Displays external temperature of the equipment (in Centigrade or Fahrenheit)
Lamp mode.....	Displays lamp mode (1: 1-lamp mode, 2: 2-lamp mode, 4: 4-lamp mode, etc.)
Lamp control.....	Displays lamp control mode (Auto, Normal, Eco, etc.)
Model name .....	Model name of the network equipment

\*1 Set up the installed date when the PJ Network Manager is newly introduced.

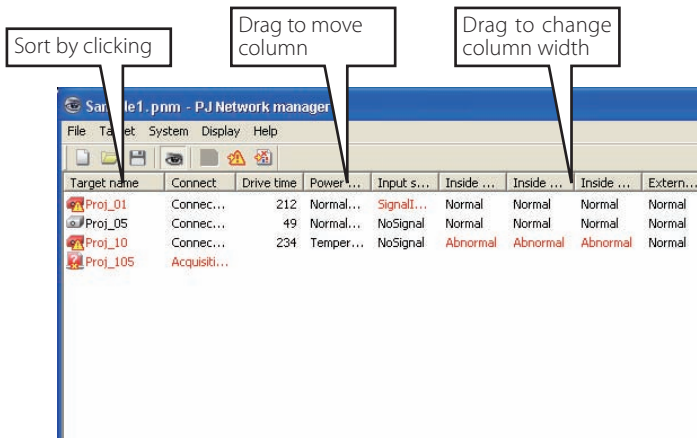
 There are some un-available columns depending on the products. The value of un-available column is displayed in blank or with "----".

### To change order or width of the column

Drag the status column name you want to change the order and move it on a new place and drop it. To change column width, set a mouse cursor onto the right edge of the column to change, drag the mouse on it and adjust the column width.

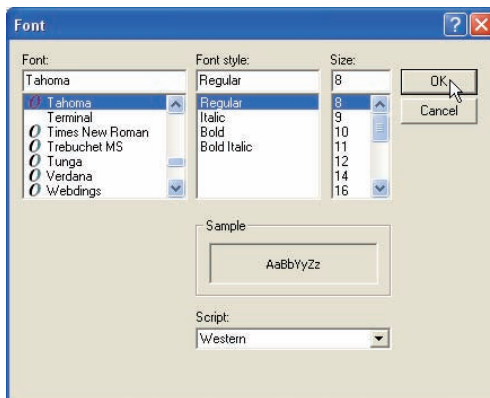
### Sorting the status list

The order of the targets on the status list can be changed by clicking the column name which you want to sort. It switches ascending or descending order by clicking the column name each time.




### Changing font

Select **Font setting** from **System** menu. The font setup window will appear. Select your desired type face, style and size on the window.

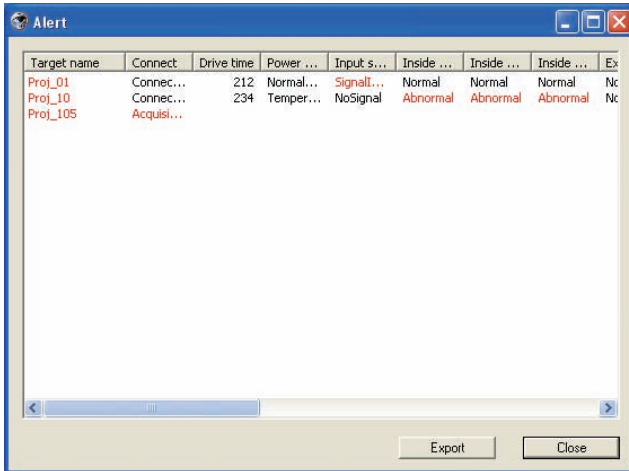


Customized font property is applied to all the windows of the setting.

## Viewing the alert information

**1** Click  button on the tool bar. The alert display window appears and the alert information of all the targets which are having an alert is listed on this window as the below.

**2** To export the alert information as text file (CSV file), click **Export** button.




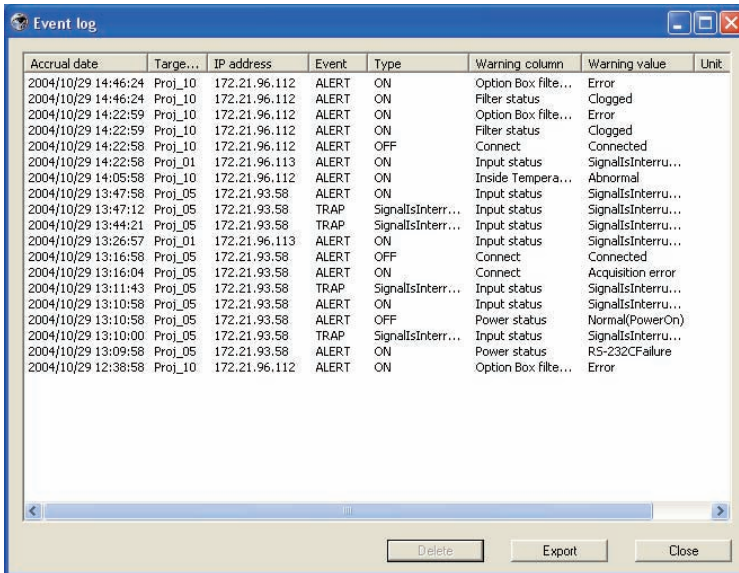
 Only the alert columns are listed. (p.17)

 The list order is the same as the status list order and it cannot be sorted.

 Column width can be changed with dragging the right edge of the column. The column order can be changed with drag and drop the column. Column can not be deleted.

## Viewing the event log

- 1 Click  button on the tool bar. The event log display window appears and the events which have been happened on the targets are listed on this window as the below.
- 2 To export these events as text file (CSV file), click **Export** button.
- 3 To delete the event log, select the accrual date item you intend to delete by clicking and then click **Delete** button. On the confirmation dialogue, click **Yes** to execute deletion.






Accrual date	Target name	IP address	Event	Type	Warning column	Warning value	Unit
2004/10/29 14:46:24	Proj_10	172.21.96.112	ALERT	ON	Option Box file...	Error	
2004/10/29 14:46:24	Proj_10	172.21.96.112	ALERT	ON	Filter status	Clogged	
2004/10/29 14:22:59	Proj_10	172.21.96.112	ALERT	ON	Option Box file...	Error	
2004/10/29 14:22:59	Proj_10	172.21.96.112	ALERT	ON	Filter status	Clogged	
2004/10/29 14:22:58	Proj_10	172.21.96.112	ALERT	OFF	Connect	Connected	
2004/10/29 14:22:58	Proj_01	172.21.96.113	ALERT	ON	Input status	SignalSInterru...	
2004/10/29 14:05:58	Proj_10	172.21.96.112	ALERT	ON	Inside Tempera...	Abnormal	
2004/10/29 13:47:58	Proj_05	172.21.93.58	ALERT	ON	Input status	SignalSInterru...	
2004/10/29 13:47:12	Proj_05	172.21.93.58	TRAP	SignalSInterr...	Input status	SignalSInterru...	
2004/10/29 13:44:21	Proj_05	172.21.93.58	TRAP	SignalSInterr...	Input status	SignalSInterru...	
2004/10/29 13:26:57	Proj_01	172.21.96.113	ALERT	ON	Input status	SignalSInterru...	
2004/10/29 13:16:58	Proj_05	172.21.93.58	ALERT	OFF	Connect	Connected	
2004/10/29 13:16:04	Proj_05	172.21.93.58	ALERT	ON	Connect	Acquisition error	
2004/10/29 13:11:43	Proj_05	172.21.93.58	TRAP	SignalSInterr...	Input status	SignalSInterru...	
2004/10/29 13:10:58	Proj_05	172.21.93.58	ALERT	ON	Input status	SignalSInterru...	
2004/10/29 13:10:58	Proj_05	172.21.93.58	ALERT	OFF	Power status	Normal(PowerOn)	
2004/10/29 13:10:00	Proj_05	172.21.93.58	TRAP	SignalSInterr...	Input status	SignalSInterru...	
2004/10/29 13:09:58	Proj_05	172.21.93.58	ALERT	ON	Power status	R5-232CFailure	
2004/10/29 12:38:58	Proj_10	172.21.96.112	ALERT	ON	Option Box file...	Error	

### Event log information items

Items	Description
-------	-------------

- |                      |   |
|----------------------|---|
| Accrual date .....   | Accrual date of the event   |
| Target name .....    | Name of the network equipment   |
| IP address .....     | IP address of the network equipment                                   |
| Event .....          | Type of the Event (ALERT, TRAP, SYSERR ) (See table on the next page) |
| Type .....           | Type of the Event (See table on the next page)                        |
| Warning column ..... | Warning column of the Event (See table on the next page)              |
| Warning value .....  | Warning value of the Event (See table on the next page)               |
| Unit .....           | Displays unit of the warning value.                                   |

-  The listed items are fixed.
-  The order of the event log list can be changed temporarily by clicking the column name which you want to sort. It switches ascending or descending order by clicking the column name each time.
-  Column width can be changed by dragging the right edge of the column. The column order can be changed with drag and drop the column. Column cannot be deleted.

## Description of Event, Type, Warning column, Warning value

Event	Type	Warning Column	Warning Value	Description
ALERT	ON : Abnormality has happened OFF : Abnormality has been cleared	Connect	Un-connected Connected Acquisition error	* Refer to the next page
		Power status	PowerFailure TemperatureError NormalAfterTempError RS232CFailure Power management Shutter management LampFailure	
		Input status	SignalsInterrupted SignalsInputted	
		Inside Temperature status (A to C) External Temperature status	Abnormal	
		Lamp status (1 to 4)	Failure Replace	
		Lamp time (1 to 4)	(setting time)	
		Filter status	Clogged	
		Filter time	(setting time)	
		Option Box filter status	Clogged Error	
		Option Box filter time	(setting time)	
TRAP	LampFailure	Lamp status (1 to 4)	Failure	* Refer to the next page
	LampReplace		Replace	
	PowerOFF PowerFailure PowerManagement ShutterManagement	Power status	Normal(Standby) Normal(OnCoolingDown) PowerFailure Power management Shutter management	
	TemperatureError	Inside Temperature status (A to C) External Temperature status	Abnormal	
	SignalsInterrupted	Input status	SignalsInterrupted	
	LampReplacementTime	Lamp time (1-4)	(lamp time)	
	FilterReplacementTime	Filter time	(filter time)	
	CloggedFilterWarning	Filter status	Clogged	
	OptionBoxFilterReplacementTime	Option Box filter time	(filter time)	
	CloggedOptionBoxFilterWarning	Option Box filter status	Clogged	
OptionBoxError	Error			
AutoPlayError	n/a	Error		
SYSERR	*MailError *MemoryError	n/a	n/a	

**Description of warning value**

Warning Column	Warning Value	Description
Connect	Un-connected Connected * Acquisition error	Projector has been disconnected from the network Projector has been connected to the network PJ Network Manager could not acquire the MIB information from the equipment
Power status	Power failure	Projector turned off due to the power failure of the projector
	TemperatureError	The projector turned off due to temperature error occurred
	NormalAfterTempError	Normal after temperature error occurred
	RS232CFailure	The RS-232C communication error occurred
	Power management	The power management function turned projector lamp off
	Shutter management	The shutter management function turned projector lamp off
	LampFailure	The lamp failure occurred
Input signal status	Normal(Standby) *	Projector turned into standby normally
	Normal(OnCoolingDown) *	On cooling down normally due to projector turned off
Inside Temperature status (A to C) External Temperature status	SignalsInterrupted SignalsInputted *	The signal was interrupted The signal was inputted again
Inside Temperature status (A to C) External Temperature status	Abnormal	The projector turned off when the temperature was abnormally high
Lamp status	ON * Failure Replace	When the lamp is on When the lamp failed to ignite. It reached lamp replacing time.
Lamp time	(lamp time)	It reached user setting lamp replacing time
Filter status	Clogged	Filter was clogged
Filter time	(filter time)	It reached user setting filter time
Option Box filter status	Clogged Error	Filter was clogged The option box filter had an abnormality
Option Box filter time	(filter time)	It reached user setting option box filter time
(Auto play error)	Error	The error occurred during the auto image display
(Mail error) (System error)	n/a	PJ Network Manager could not send mail PJ Network Manager could not acquire the memory

 The warning value with "\*" in the above table shows the event when the alert has cleared, alert type is "OFF".

 The column order and width of the event log window are saved to the registry of the computer.

 Up to 1000 of events can be stored. If it exceeds 1000 events, the oldest event is deleted and the latest event is added. The event log can be saved to the management file.

## About event treatment

If the PJ Network Manager receives an event, it executes following event treatment items which are selected in the system default setting.

- Sound warning alarm
- Send e-mail
- Display warning dialogue

### Sound warning alarm

If the PJ Network Manager receives an event, the computer beeps an alarm sound. The alarm sound is depending on your computer sound setting.

☞ The alarm sound is not made when your computer does not provide any speaker or the sound volume is muted.

### Send e-mail

Following example message is sent to the e-mail address you set up as the destination mail address.

```
From: Test1 <admin@abc.xxx.com> (manage-  
ment file name)  
Date : 2004/10/29 21:30  
To : user@abc.xxx.com  
Subject : Alert message  
-----  
Alert has occurred  
* Accrual date : 2004/10/29 21:13:42  
* Target name : Proj_10  
* IP address : 192.168.1.101  
* Event : ALERT  
* Type : ON  
* Warning column : Power status  
* Warning value : Power failure
```

☞ For the further information of event, type, warning column and warning value, see the item "Viewing the event log" (☞p.21).

☞ The setting of event treatment, refer to item "Setting up default setting" (☞p.15).

### Notes on using Windows XP Service Pack 2 (SP2) / Windows Vista

Windows Firewall is turned on by default in Windows XP SP2 and Windows Vista. Due to this Windows Firewall, the send e-mail function is not available. When using this mail function, you need to cancel the block for PJ Network Manager application. For the further details of Windows Firewall, see Windows help on your computer.

## Display warning dialogue

Following dialogue window appears on the screen if event occurs.



For the further information of event, type, warning column and warning value, see item "Viewing the event log" (p.21).


## Storing the management file

When you monitor the network equipment with the PJ Network Manager, you can save the registered target information, system setting and event log information into the management file with a free file name. It is useful if you manage multiple equipment in the network.

Click  button on the tool bar and save it with free file name. The extension is ".pnm".

The management file contains following information.

Items	Description
Header .....	Management file section, file version
System default setting .....	Default value of the system setting - Monitoring interval - Event reception process - Temperature unit - E-mail information
Target information .....	Information of the registered target - Target information (target name, IP address, Community, Introduction date) - target MIB information - Warning value set up
Event log information .....	Event log information (ALERT, TRAP, SYSERR)

 The maximum volume of a management file is required about 1MB. (Number of registrable targets is 200, number of events is 1000)

## Information saved to the registry

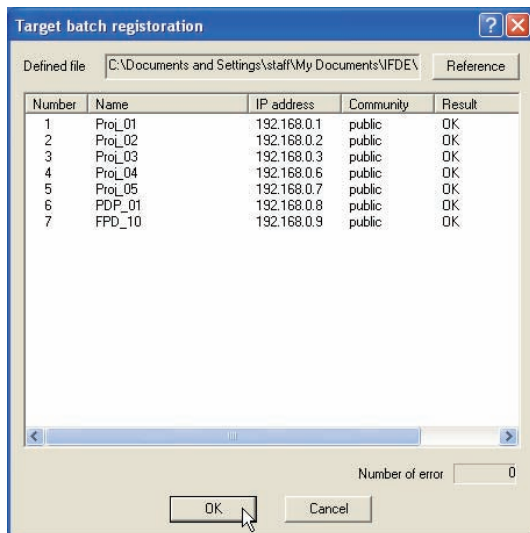
Following application setting information is saved to the registry of your computer. So the setting condition is memorized even after quitting the application.

Items	Description
Status window information .....	Display position and size of the status list window
Status list information .....	Display status column, column width and column order
Event log list information .....	Column width and order of the event log list
Font set up .....	Font setting value (Type face, size and style)

## Registering the target information from the defined file at once

The PJ Network Manager provides a function to import the target information from the defined file at once. Prepare the defined file (CSV data format) in which the target information is written along the format shown below.

- 1 Select **Target batch registration** from **System** menu. The target batch registration window appears.
- 2 Click **Reference** button and select a defined file to import the target information. The imported target information will be listed on the target batch registration window.



\* If there is an error in the imported defined file, the error information will be indicated on the Result column. Retry importing after correcting the defined file.

- 3 Click **OK** button to execute the registration.

## Format of the defined file

The defined file is a CSV data file created by the spreadsheet application and is defined as follows;

Column	Description (example)
Target name.....	Name of target equipment (Proj_01, Proj_03, PDP_01, etc.)
IP address .....	IP address (192.168.0.1, etc.)
Community .....	Name of SNMP community. Default value of our network products is "public"

## Example of the defined file

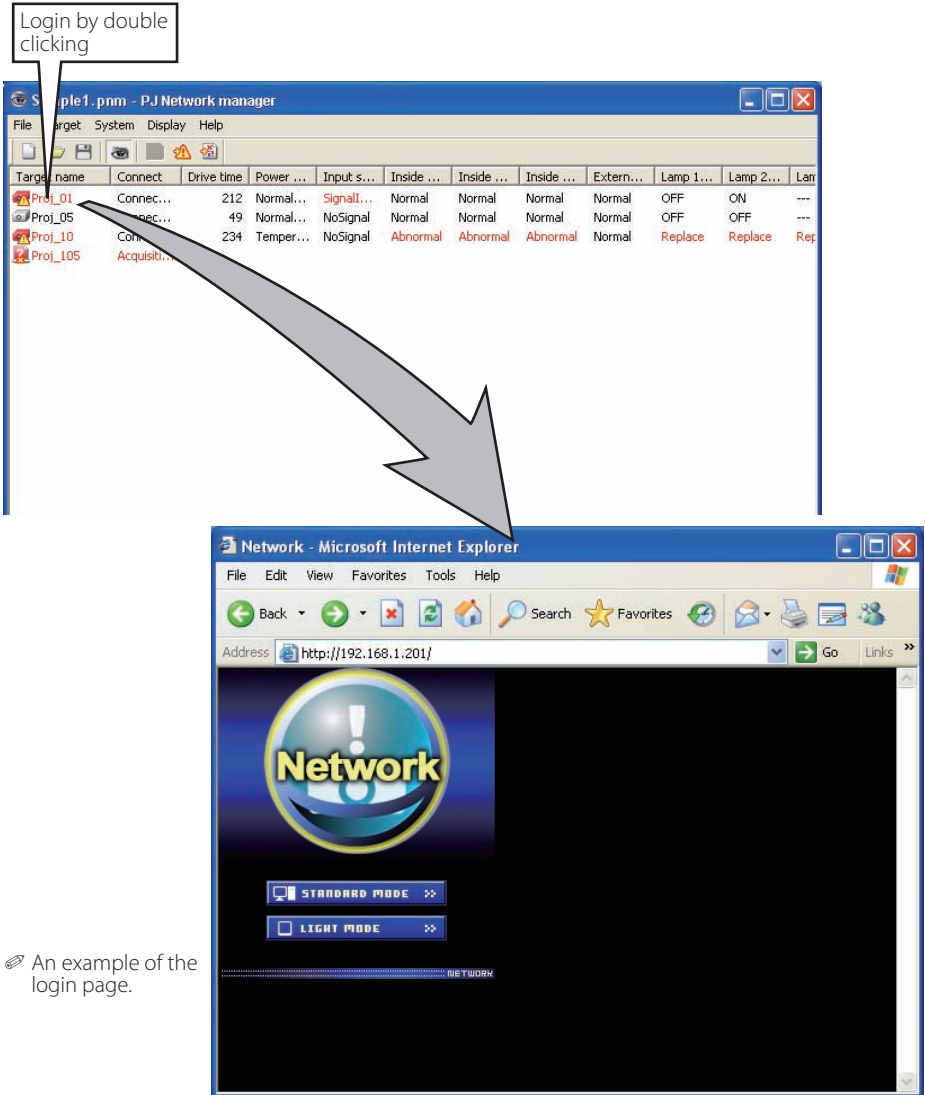
The table below shows the example of the defined file provided with the target information. Save this file as the CSV file.

Target name	IP address	Community
Proj_01	192.168.0.1	public
Proj_02	192.168.0.2	public
Proj_03	192.168.0.3	public
Proj_04	192.168.0.6	public
Proj_05	192.168.0.7	public
PDP_01	192.168.0.8	public
FPD_10	192.168.0.9	public

## Login to the target equipment

After double clicking the target name on the status list, the computer launches web browser and displays the login window of the target equipment.

You can control and set up the projector remotely by using the web browser. For the further information of instruction, see the separated network owner's manual.



PM-KM5AC

PJ NETWORK MANAGER OWNER'S MANUAL  
FOR WINDOWS



SANYO Electric Co., Ltd.