



Specifications

Product Number	PLC-XM150	PLC-XM150L	PLC-XM100	PLC-XM100L
System	RGB liquid crystal shutter projection system			
LCD Panel	0.8 inch x 3, Aspect Ratio 4:3			
Pixel Count	786,432 (1024 x 768) x3, Total pixels 2,359,296			
Projection Lens	Power-driven zoom (1 - 1.7x), f=26.9 - 45.4, F = 1.7 - 2.3*XM150L/XM100L:Optional lens			
Light Source	330 W		275 W	
Screen Size (Projection Distance)	40" - 400" 4.1-75.1' 100' 11.2-18.7' (Projection distance varies depending on the lens)			
Color Reproducibility(When projecting video signal)	Full color (1.07 billion colors)			
Contrast Ratio (Full On / Full Off)*1	1000:1		1000:1	
Brightness *1	6,000 lumens		5,000 lumens	
Uniformity	90 %			
Audio Output and Speaker	7W (monaural) x1			
Scanning Frequency	Horizontal: 15 - 100 kHz, Vertical: 48 - 100 Hz, Dot Clock: 140 MHz or less			
Resolution (resizing) (when using RGB signal)	1024 x 768 dots (WUXGA dot resizing possible)			
Terminals	PC Input: • Digital input (x1): DVI-D (HDCP compatible) • Analog RGB input (x2), D-sub 15, BNC 5-type Video Input: • Video input (x3): BNC 3-type (VIDEO / Y-Pb / Cb-Pr / Cr), RCA 3-type (VIDEO / Y-Pb / Cb-Pr / Cr), S-video • Analog RGB (x1); D-sub 15 *2			
Graphical Output	• Audio input: Stereo mini jack x2, RCA (L, R) x 1 • Audio output: Stereo mini jack x1			
Audio Input/ Output	• Control port (x1); D-sub 9 • USB terminal; type B x1 *3 • Wired remote control connection terminal; Mini jack x1 • Wired LAN; RJ-45 (100Base-TX / 10Base-T)			
Operating Temperature	41 - 104°F			
Power Consumption	100-120 V	490 WStandby: 0.4 W / 22 W (Eco / Network)	423 WStandby: 0.4 W / 22 W (Eco / Network)	
	200-240 V	460 WStandby: 0.6 W / 24 W (Eco / Network)	400 WStandby: 0.6 W / 24 W (Eco / Network)	
Power Source	AC 100 - 120 V, AC 200 - 240 V, 50 / 60 Hz			
Dimensions(WxHxD)	19.3 x 6.5 x 17.1 inch - PLC-XM150 / XM100		19.3 x 6.5 x 14.6 inch - PLC-XM150L / XM100L	
Weight	21.3 lbs		21.3 lbs	
Main Accessories	Removable power cord x1, USB cable x1, D-sub 15 cable x1, PIN code-label, Quick reference guide, Owner's manual(CD-ROM), Remote control x1 (AAA battery x2)			

*1 Measurement, measuring conditions, and method of notation all comply with ISO 21118 international standards. *2 For analog signals only. Some restrictions apply to output signals. Not all types of input signals are supported. *3 The USB interface may not be compatible with every USB device. *4 All product names and company names are trademarks or registered trademarks of their respective companies. * Product appearance and specifications are subject to change without notice. Replacement Lamp Type No.: 610 346 9607 (PLC-XM150/XM150L) 610 347 5158 (PLC-XM100/XM100L)

Optional Lenses

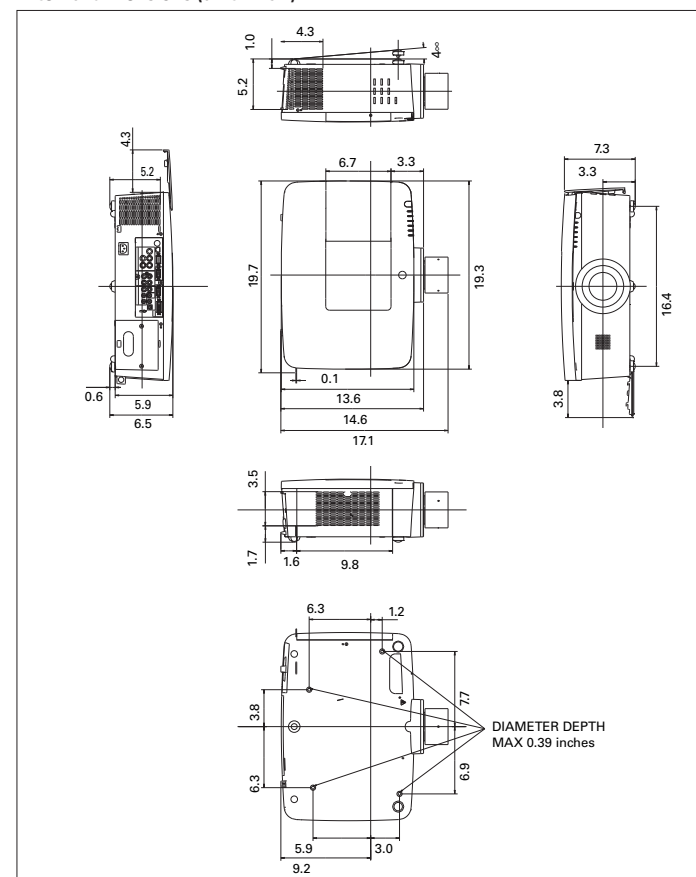
Part Number	LNS-W21	LNS-W20	LNS-S20 (PLCXM150/ XM100)	LNS-T20	LNS-T21
Type	Short Fixed Lens	Short Zoom Lens	Standard Zoom Lens	Long Zoom Lens	Long Zoom Lens
Image					
Motor Driven	No	Yes	Yes	Yes	Yes
Zoom/Focus	Fixed/Power	x1.3/Power	x1.7/Power	x1.6/Power	x1.6/Power
Focal length (inch)	0.51	0.80-1.09	1.06-1.79	1.80-2.91	2.91-4.61
F value	2.0	1.8-2.3	1.7-2.3	1.8-2.3	1.8-2.3
lens aperture (inch)	4.00	4.53	3.68	3.68	3.68
lens weight (lbs)	2.38	2.64	1.87	2.60	2.64
Part Number	H1:H2	10:0-1:1 (approx.)	10:0-1:1 (approx.)	10:0-1:1 (approx.)	10:0-1:1 (approx.)
W1:W2	1:1 (Fixed)	3:2-2:3 (approx.)	3:2-2:3 (approx.)	3:2-2:3 (approx.)	3:2-2:3 (approx.)
Throw Ratio	0.8:1	1.25-1.70:1	1.70-2.89:1	2.89-4.60:1	4.60-7.36:1
Throw distance	ft	ft	ft	ft	ft
inch	Fixed	Wide	Tele	Wide	Tele
40	1.97	3.2	4.3	7.2	11.8
60	3.06	4.9	6.6	11.2	18.0
80	4.14	6.6	8.9	14.9	24.0
100	5.22	8.2	11.2	18.7	30.2
120	6.30	10.2	13.5	22.3	36.4
150	7.93	12.5	17.1	27.9	45.6
200	10.63	16.7	22.6	37.4	61.4
250	13.34	21.0	28.5	46.9	76.8
300	16.05	25.3	34.1	56.4	92.2
350	18.75	29.5	40.0	65.9	107.6
400	21.46	33.5	45.6	75.5	123.0

* Approximate projection distances are calculated based on lens specifications. Individual lenses diverge from this figure by to 5% due to slight variations in lens size shape

Terminals



External dimensions (unit: inch)



SANYO Presentation Technologies

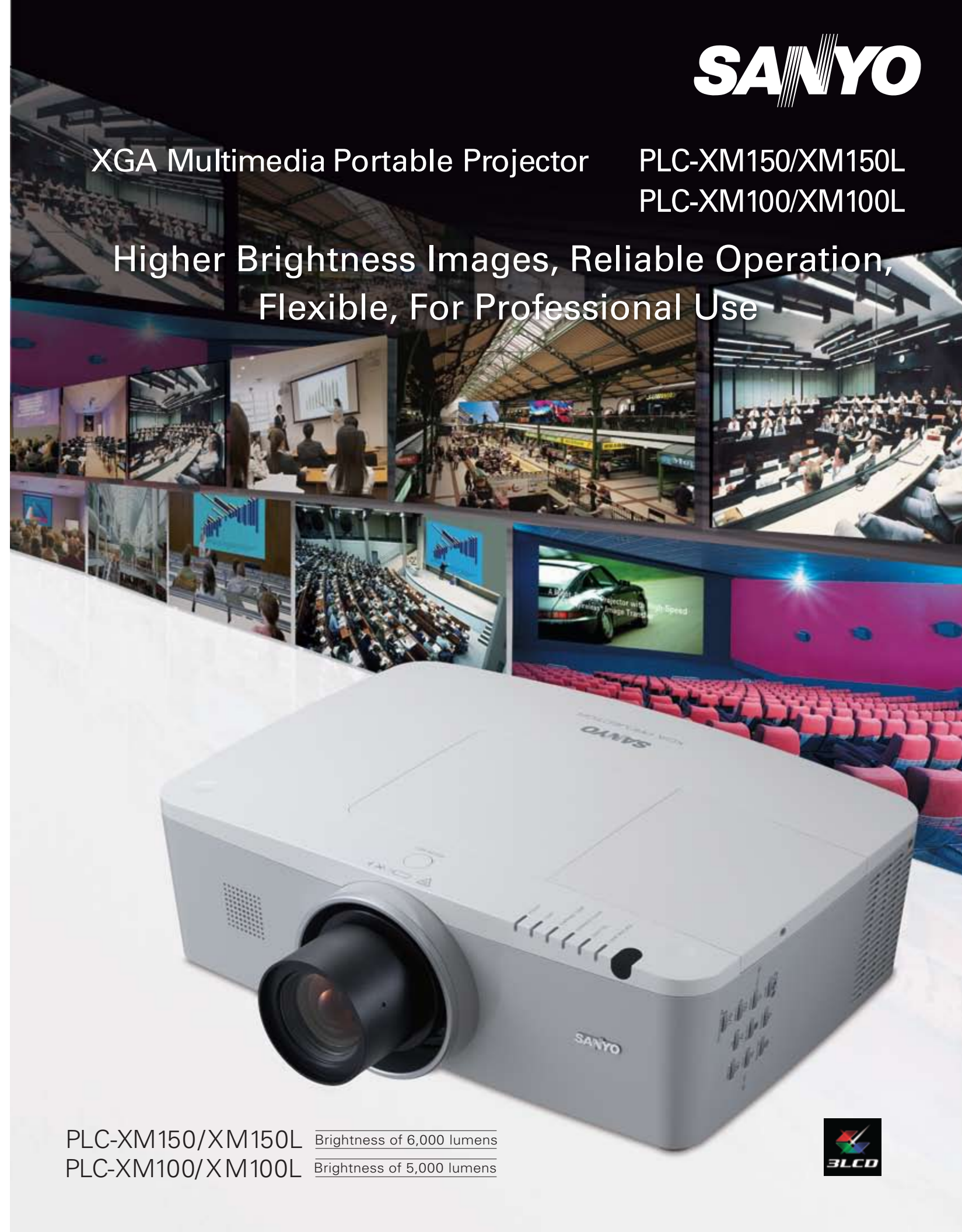
Toll free: 888-337-1215 www.sanyoprojectors.com

© 2010 SANYO North America Corporation.

XGA Multimedia Portable Projector PLC-XM150/XM150L

PLC-XM100/XM100L

Higher Brightness Images, Reliable Operation,
Flexible, For Professional Use



PLC-XM150/XM150L Brightness of 6,000 lumens

PLC-XM100/XM100L Brightness of 5,000 lumens



High Brightness and Durable Inorganic Optical Engine System (D.I.O.S.)

Features a highly reliable new optical engine with inorganic panels, this projector has a brightness of 6000 lumens (XM150/XM150L) and a high contrast of 1000:1*, putting it at the top of its class in performance. Naturally suited to use in venues such as large meeting rooms, conference rooms and lecture halls, the projector is also ideal for projecting digital signage in bright places.

*When in 'Auto' lamp mode

Lens Center Layout (Symmetry)

A symmetrical design with the lens in the center of the projector has been adopted to suit ceiling installation in particular. This allows the projector and the screen to be centered together, which not only makes design and installation much easier, but also offers a sense of greater stability through symmetry of the positioning between projector and screen.



Easier Replacement

Lamp replacement has been simplified to make maintenance easier. Easy removal and replacement of the lamp from the top. Of course the lamp can also be replaced easily even if the projector is ceiling mounted.



Active Maintenance Filter (AMF) System

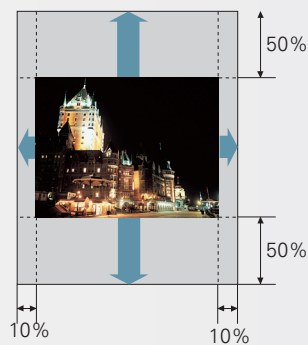
Maintenance for the filter, which prevents dust from entering the projector, is an extremely important task for sustaining projector performance. Built-in airflow sensors and atmospheric pressure sensors detect changes in the intake airflow volume and filter clogging. If the airflow drops level, the filter is automatically wound in to produce a below a predetermined clean filter surface, so there is no need to manually clean the filter. The replacement cycle for the filter cartridge is approximately 10,000 hours.* This raises reliability while lowering maintenance costs.



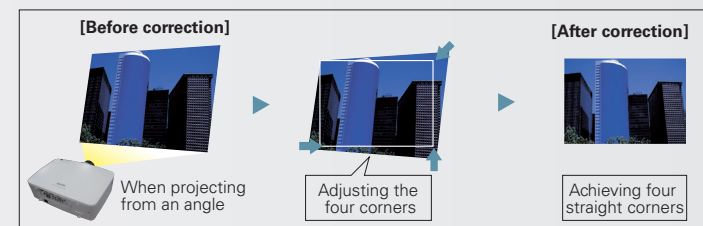
* Lamp Control: This value is calculated by an original SANYO test based on JIS D0207 test methods with Normal mode selected.

Powered Vertical/Horizontal Lens Shift Corner Keystone

Featuring both vertical and horizontal lens shift (vertical: +/- 50 %, horizontal: +/- 10 % (maximum)), the PLC-XMseries enables intuitive operation for easy on-site setup.



The Corner Keystone function corrects trapezoidal distortion. To square the image, simply designate the four corners with the remote control or projector buttons. The corrected data is stored in memory, so rectangular screens can be displayed with permanently installed projectors at lecture hall and conference room.



Powered Zoom and Focus

Zoom and focus can be carried out electronically, so that adjustments can be made easily (smoothly). Of course operations can also be carried out using the remote control, so that adjustments can be carried out easily from a distance even after the projector has been installed in a high location.

Interchangeable Lenses (Optional)

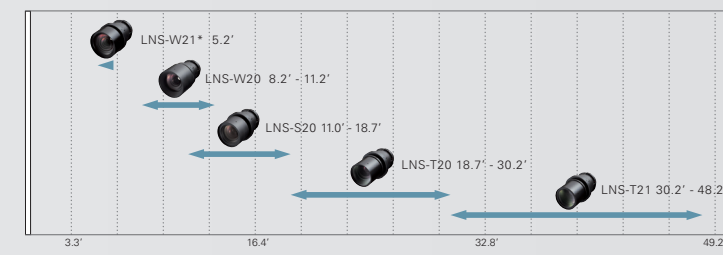
To enable projection in various locations, the lens lineup extends from short to long focus lenses. No additional tools are necessary for changing lenses. Simply press the button and screw in the interchangeable lens.



A Wide Range of Optional Lenses

5 different optional lenses for various uses. PLC-XM150 and XM100 include a standard lens (LNS-S20).

Projection distance of standard lens (to 100 inch screen)



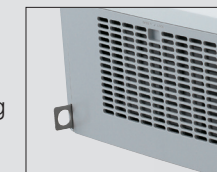
* It might be different depending on setting situation

Mechanical Shutter System

The Mechanical Shutter system is popular for a variety of professional uses. It allows this star-studded selection of SANYO Portable projectors to meet a host of demanding business needs, including meetings, entertainment and promotional applications.

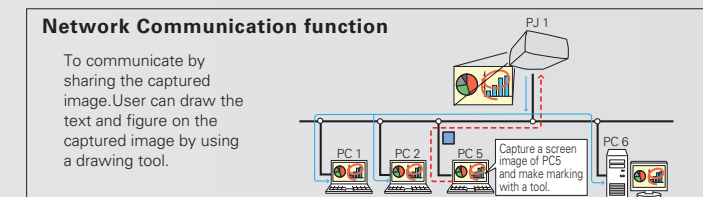
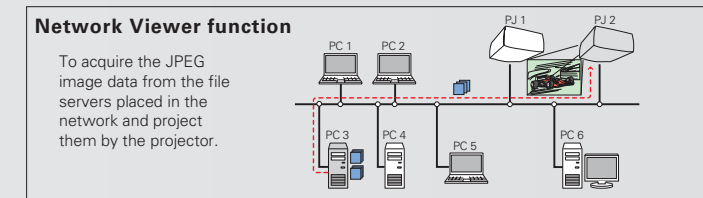
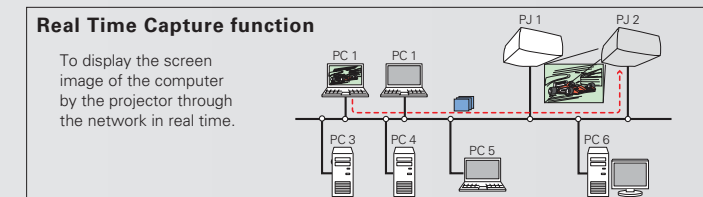
Anti-Theft Hook

The anti-theft hook lets you attach a security device to the projector for strong protection against theft.



Featuring the PJ-Net Organizer Box (option: POA-PN03C)

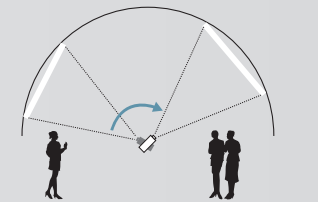
The PJ-Net Organizer (POA-PN03C) is provided as standard equipment, for centralized control of projectors over a wired network. Installing the optional PJ Master into a PC or server also lets you control the PJ-Net Organizer-mounted projectors over a network.



Tilted Installation Possible (360° Tilt Angle)

The projector can be installed at a 360° tilt angle in the vertical direction. This makes it possible to project images facing directly above or below the projector.

Vertical Installation
The PLC-XM150/XM150L
PLC-XM100/XM100L
can also be installed to
project images upward
or downward.



Auto Input Signal Search

When using a conventional projector, you have to physically select the input signal. Auto Input Signal Search automatically determines the input signal when the projector is installed and the power is turned on, and sets the input for you.

Built-in LAN Network Control Function

A centralized management and control system can be easily configured.

* This function comes as standard equipment.



PLC-XM150/XM150L

Brightness of 6,000 lumens

PLC-XM100/XM100L

Brightness of 5,000 lumens